



上海山卓重工机械有限公司



高压磨粉机

www.shszzg.com



9.3

6%

280

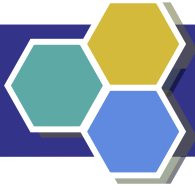




					mm	mm	kw	
		mm	mm	mm				
R8514	3	270	140	850	140	20	0.613- 0.033	22
4R9518	4	310	180	950	180	25	0.613- 0.033	37
5R4121	5	410	210	1280	210	25	0.613- 0.033	75
6R4528	6	450	280	1600	280	35	0.613- 0.033	132

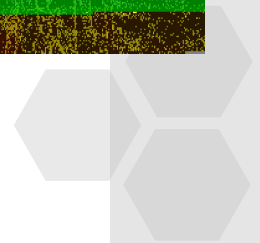
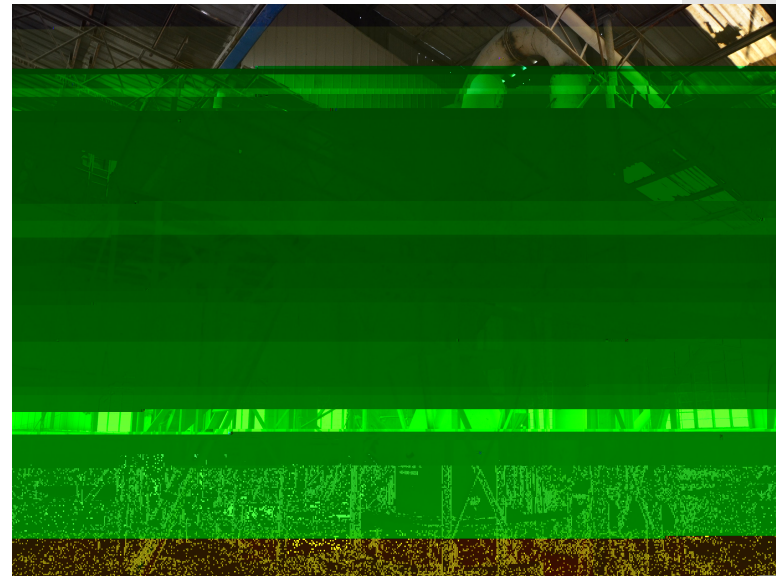


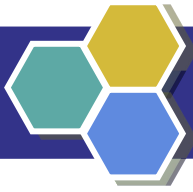
	()			
	0.25 60	0.125 120	0.075 200	0.044 325
	(/)			
3R8514	2.0-5	1.8-4.6	1.3-2.8	1.0-2.0
4R9518	2.5-6.6	2.0-5.6	1.8-3.6	1.3-3.0
5R4121	6.0-16	5.0-15	4.0-10	2.0-7.0
6R4528	6.0-20	4.6-20	6.0-15	3.0-10



1000-1500

1.2





◆ 1

10-20%

800-1200kg

◆ 2

9.3

◆ 3

0.613 (30)

0.033 425

0.013

1000

◆ 4

◆ 5

◆ 6



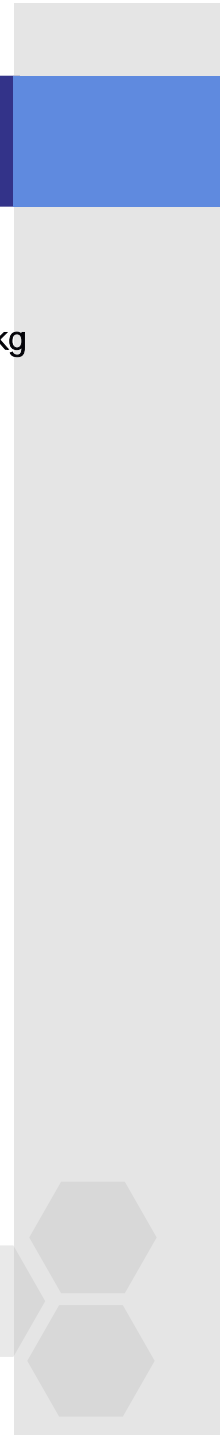
◆ 1

◆ 2

"

"

◆ 3





◆ 6



◆ 7



1

2

1

2

1

2





- ◆ **400** **400-009-2658**
- ◆ **021-6199 5535**
- ◆ **021-6199 5565**
- ◆ **021-6199 5583**
- ◆ **15221891319 / 15021204919**
- ◆ **021-6810 2903**
- ◆ **sz@shszzg.com**
- ◆ **201323**
- ◆ **http://www.shszzg.com**
- ◆ **3275**

